



Harewood Hill, Theydon Bois, CM16

BUTLER & STAG



## A wonderful double fronted semi-detached family home occupying a prime location in Theydon Bois village



### Freehold

- Semi Detached Family Home
- Five Bedrooms/Two Bathrooms
- Well Presented Throughout
- Large Open Plan Kitchen/Dining Room
- Utility Room/Downstairs WC
- 90' Rear Garden

This delightful character house has been well maintained and cared for by the current owners and is situated in the highly sought after village location of Theydon Bois.

Accommodation is arranged over two floors comprising lounge, a spacious open plan kitchen/dining room with bi-folding doors that opens onto the well presented garden, a very handy utility room with downstairs WC. The first floor has four bedrooms and a family bathroom. the second floor you will find the master with en-suite.

The secluded rear garden extends to 90' approx. with a north aspect and the front garden has a driveway perfect for off street parking.

Harewood Hill is a wide tree lined residential turning in this ever popular village. Local amenities include a good range of shops, pubs, restaurants and leisure facilities. There are several well regarded state and private schools within easy reach and good transport links into London.

Theydon Bois station (Central Line) is a short walk and provides swift access into central London. Offered Chain Free

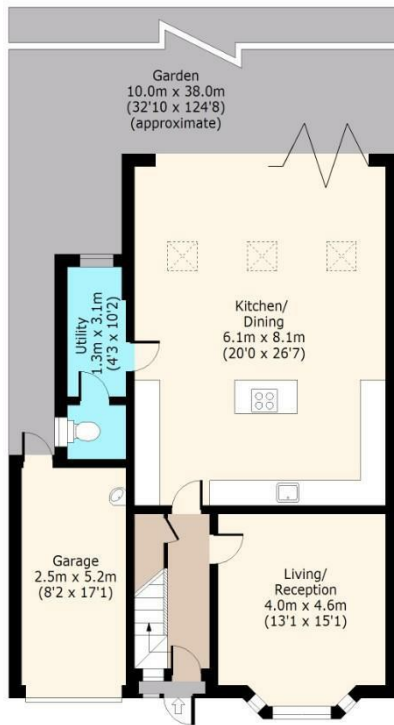




## Harewood Hill

### Ground Floor

Approx. 97.33 Sq. meters (1048 Sq. feet)



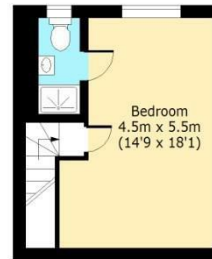
### First Floor

Approx. 66.49 Sq. meters (716 Sq. feet)



### Second Floor

Approx. 24.75 Sq. meters (266 Sq. feet)



Total area: approx. 188.57 Sq. meters (2030 Sq. feet) (Including Garage)

Total area: approx. 175.57 Sq. meters (1890 Sq. feet) (Excluding Garage)

For illustration purposes only - not to scale

[www.lpaplus.com](http://www.lpaplus.com)

# BUTLER & STAG

☎ 01992 667666

🏠 4 Forest Drive, Theydon Bois, Essex, CM16 7EY

✉ [theydon@butlerandstag.com](mailto:theydon@butlerandstag.com)

[www.butlerandstag.uk](http://www.butlerandstag.uk)

IMPORTANT NOTICE - These particulars have been prepared in good faith and they are not intended to constitute part of an offer or contract. We have not performed a structural survey on this property and the services, appliances and specific fittings have not been tested. All photographs, measurements, floor plans and distances referred to are given as a guide and should not be relied upon.